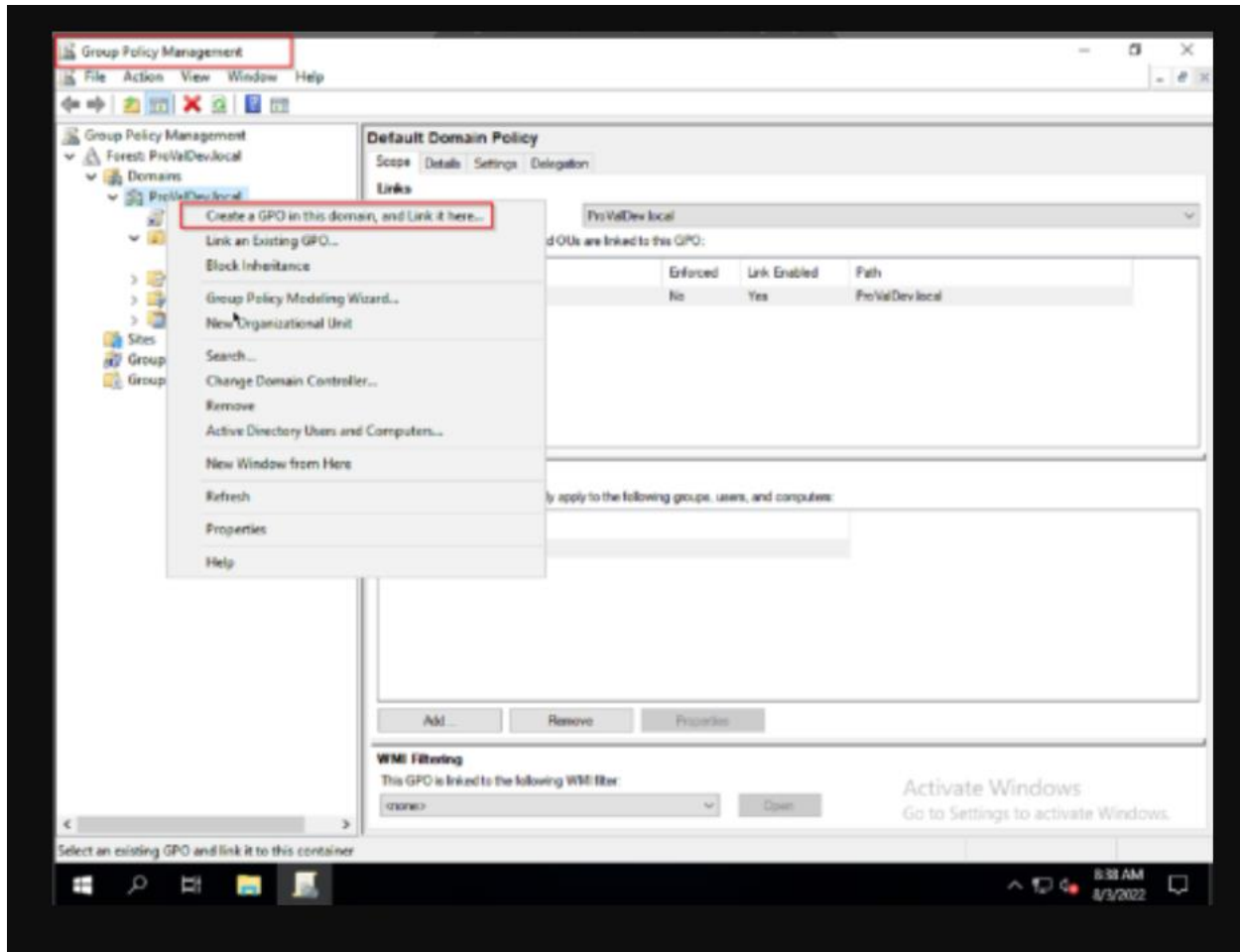


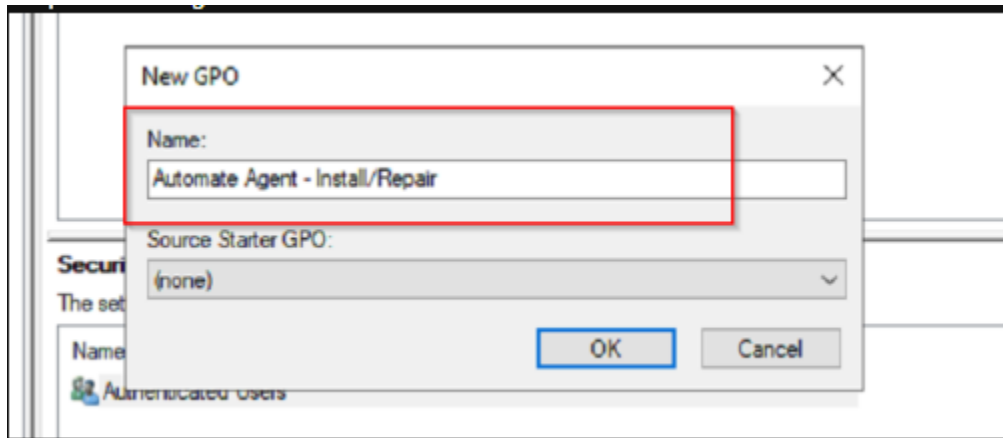
Creating Agent Deployment GPO

Step 1:

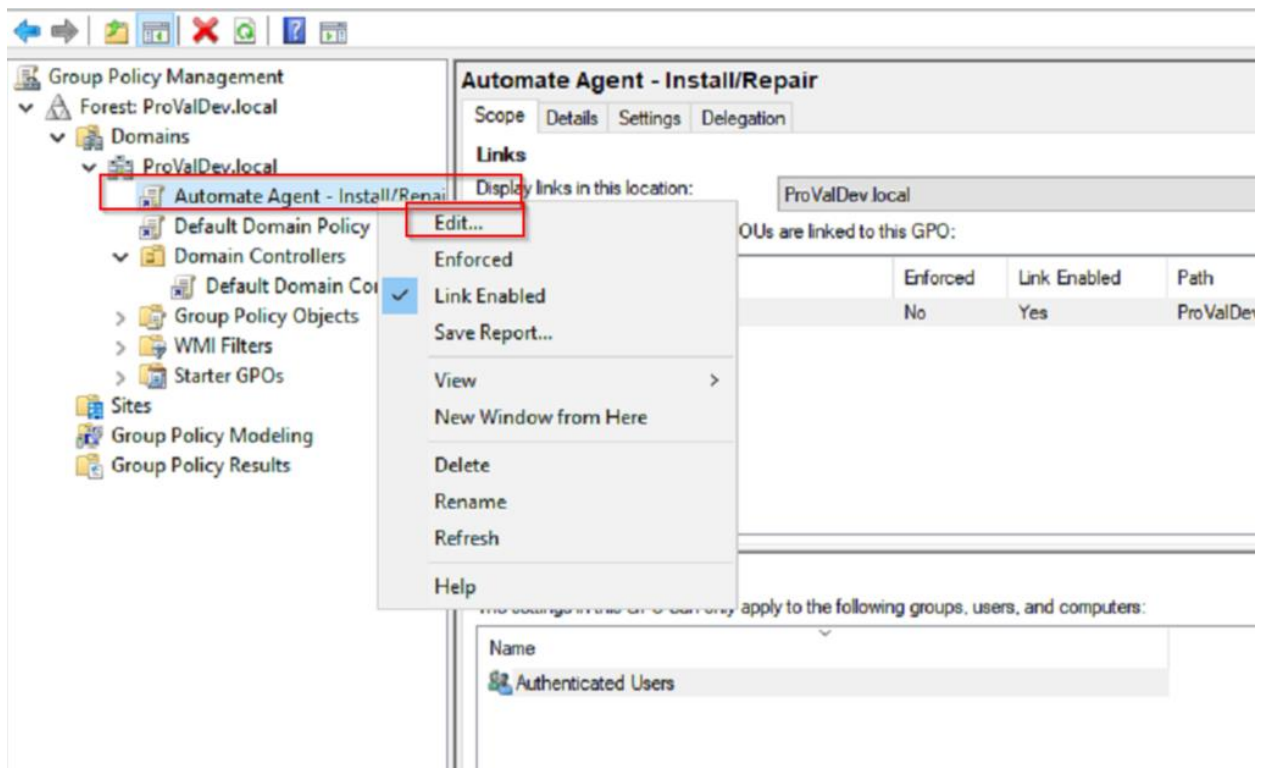
Open "Group Policy Management", right-click on the domain you would like to create GPO for, and select 'Create a GPO in this domain, and Link it here to create a new GPO'. Or you can edit an existing GPO to add our PS script as a startup script.



Step 2: Time to give this GPO a suitable name.

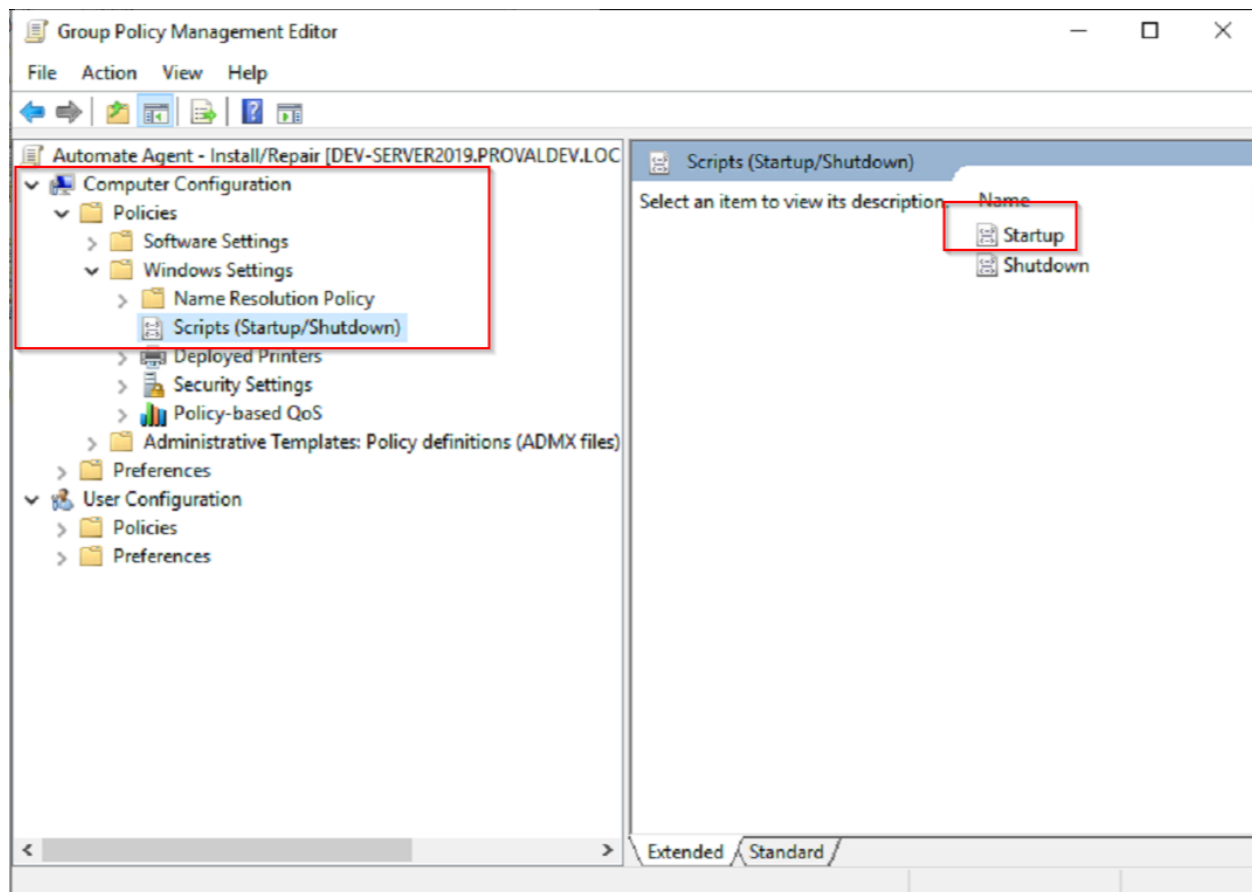


Step 3: Now that our GPO is created, let's add the start-up script to it. Right-Click the GPO you just created and select 'Edit...'.

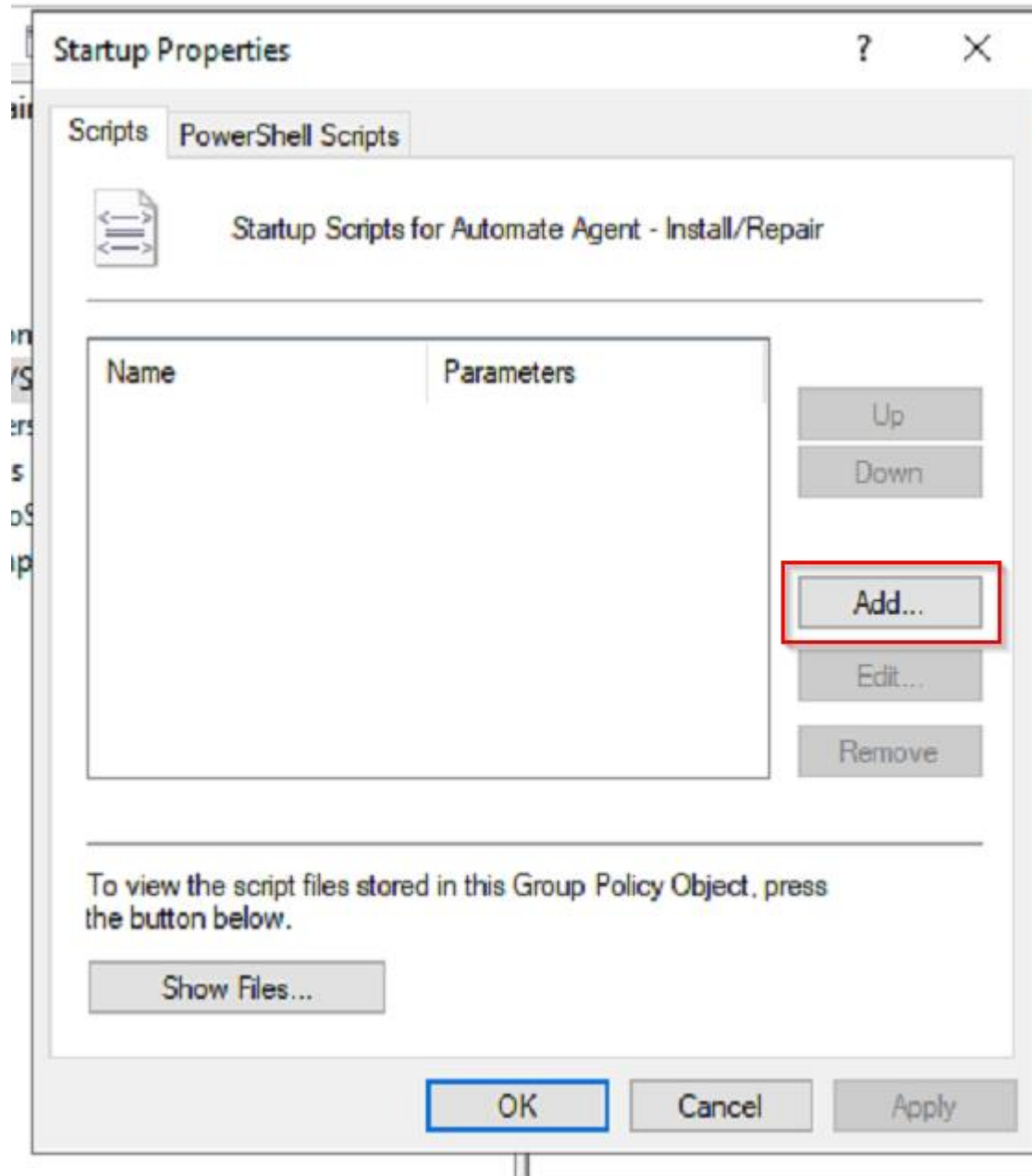


Step 4: Now this will take you to the "Group Policy Management Editor" screen.

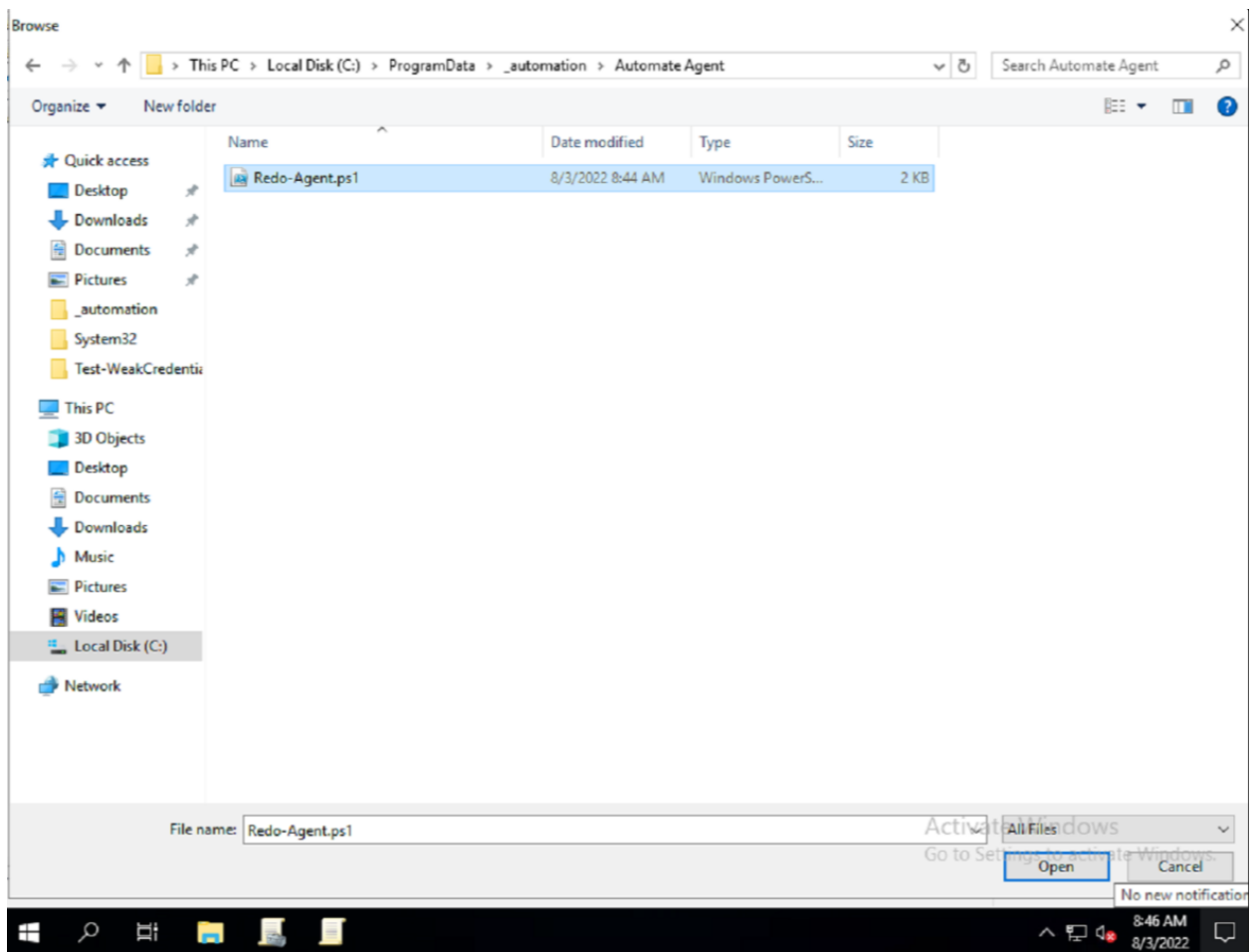
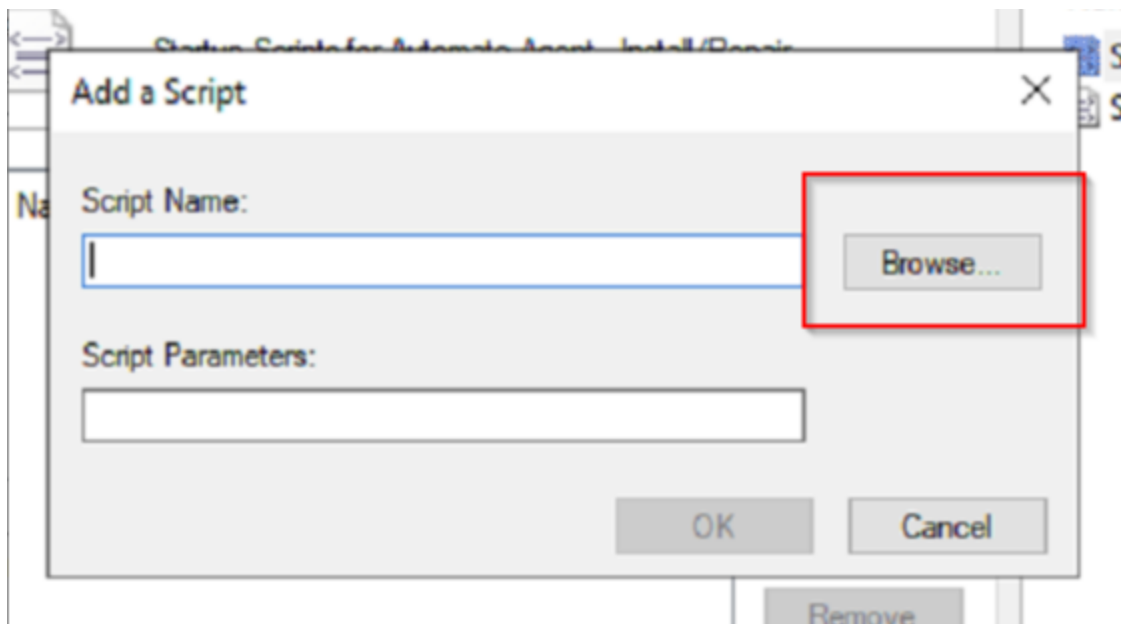
Go to "Computer Configuration > Policies > Windows Settings > Scripts (Startup/Shutdown)" and double-click on the "Startup" option at right.

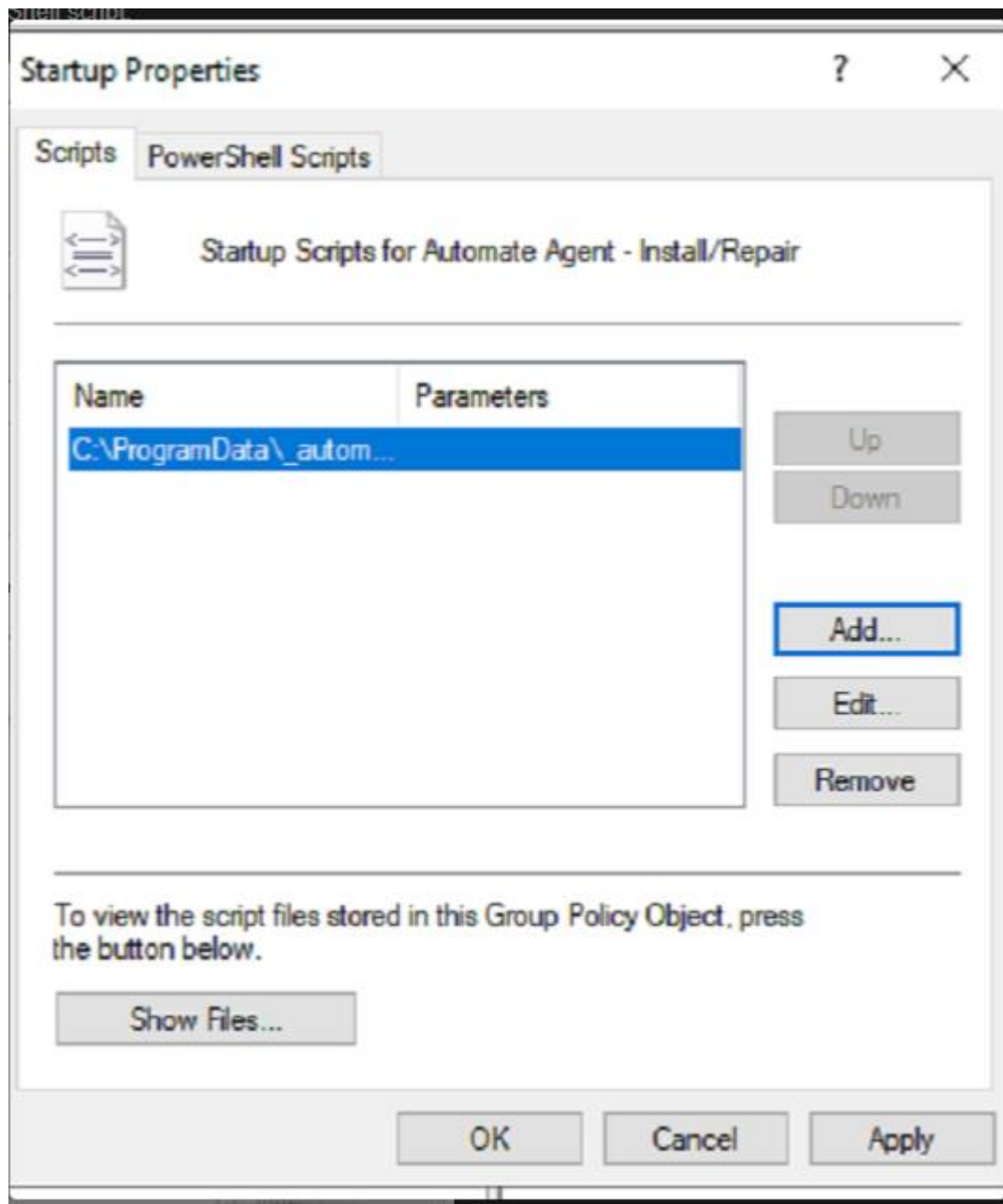


Step 5: Click on "Add" button.

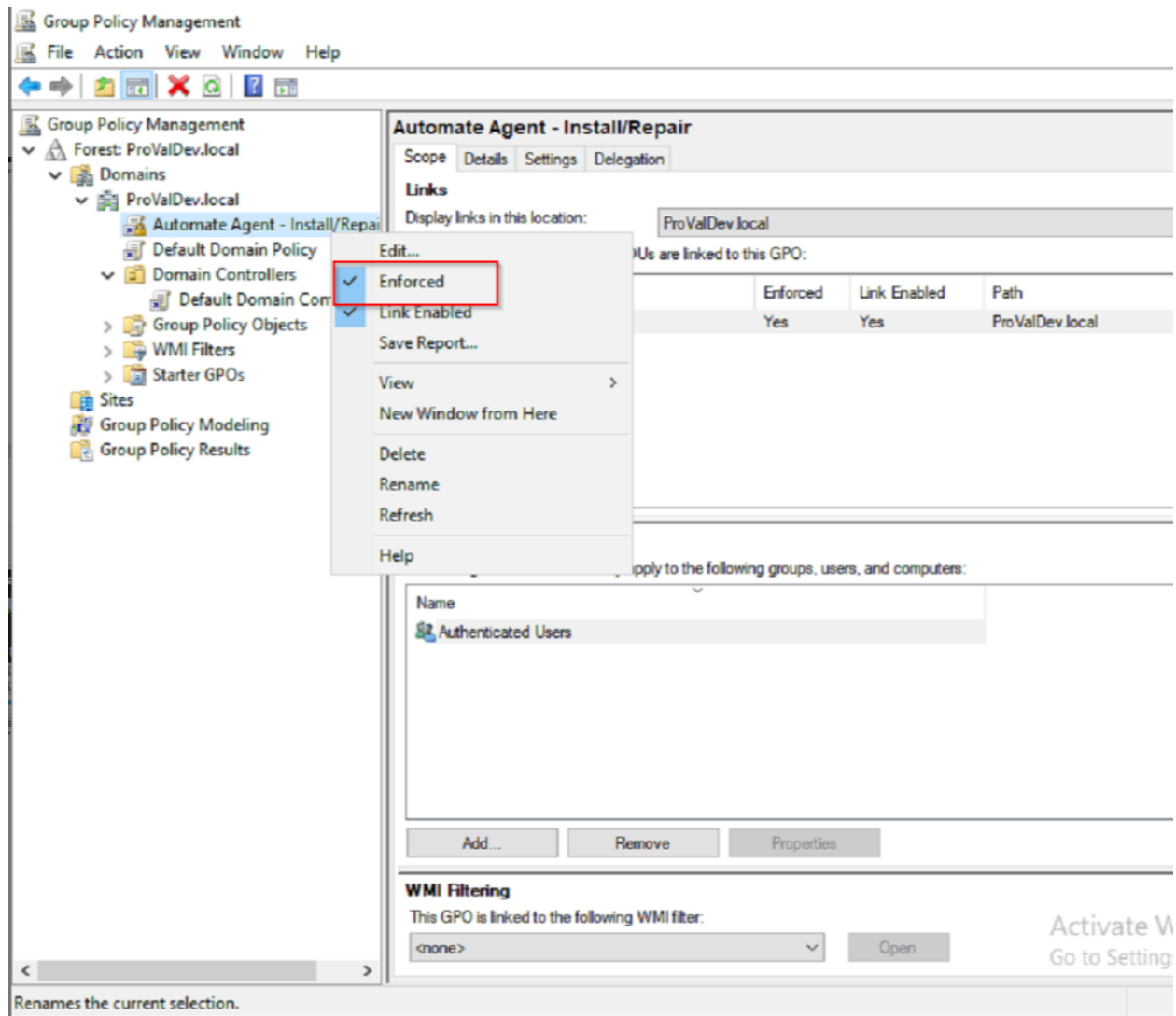


Step 6: Now it's time to browse for our PowerShell script.



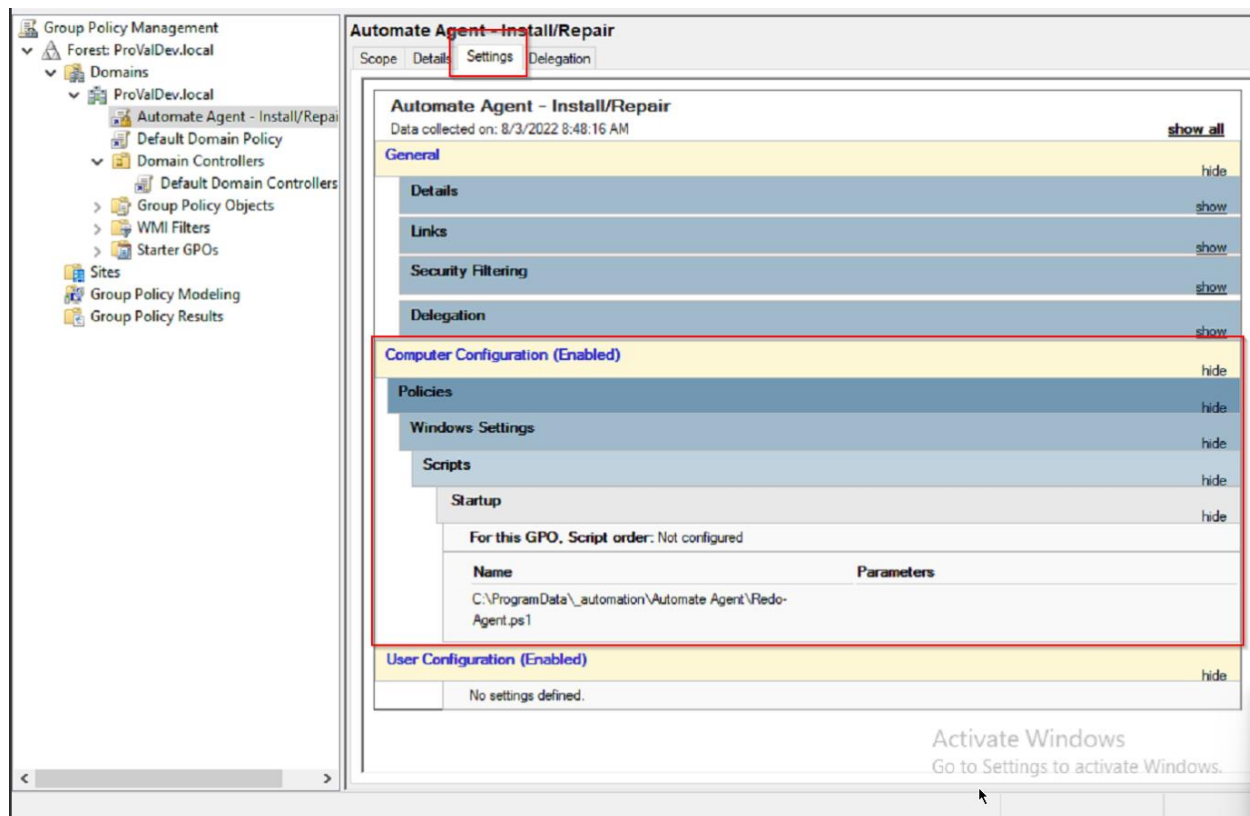


Step 7: Once, we have selected our script and saved the GPO, right-click on your GPO and select the "Enforce" option.



Verification:

You can verify the GPO from the settings section.

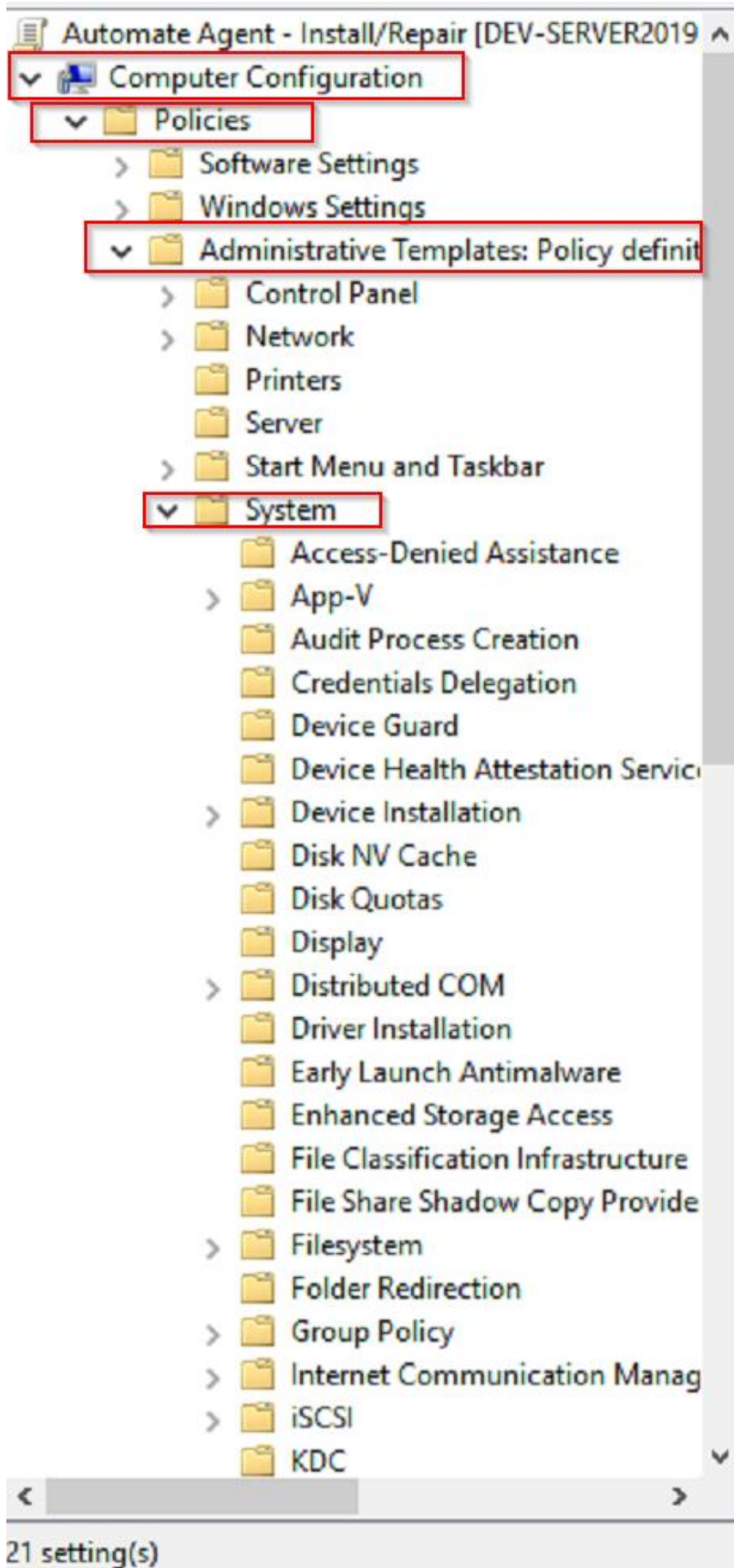


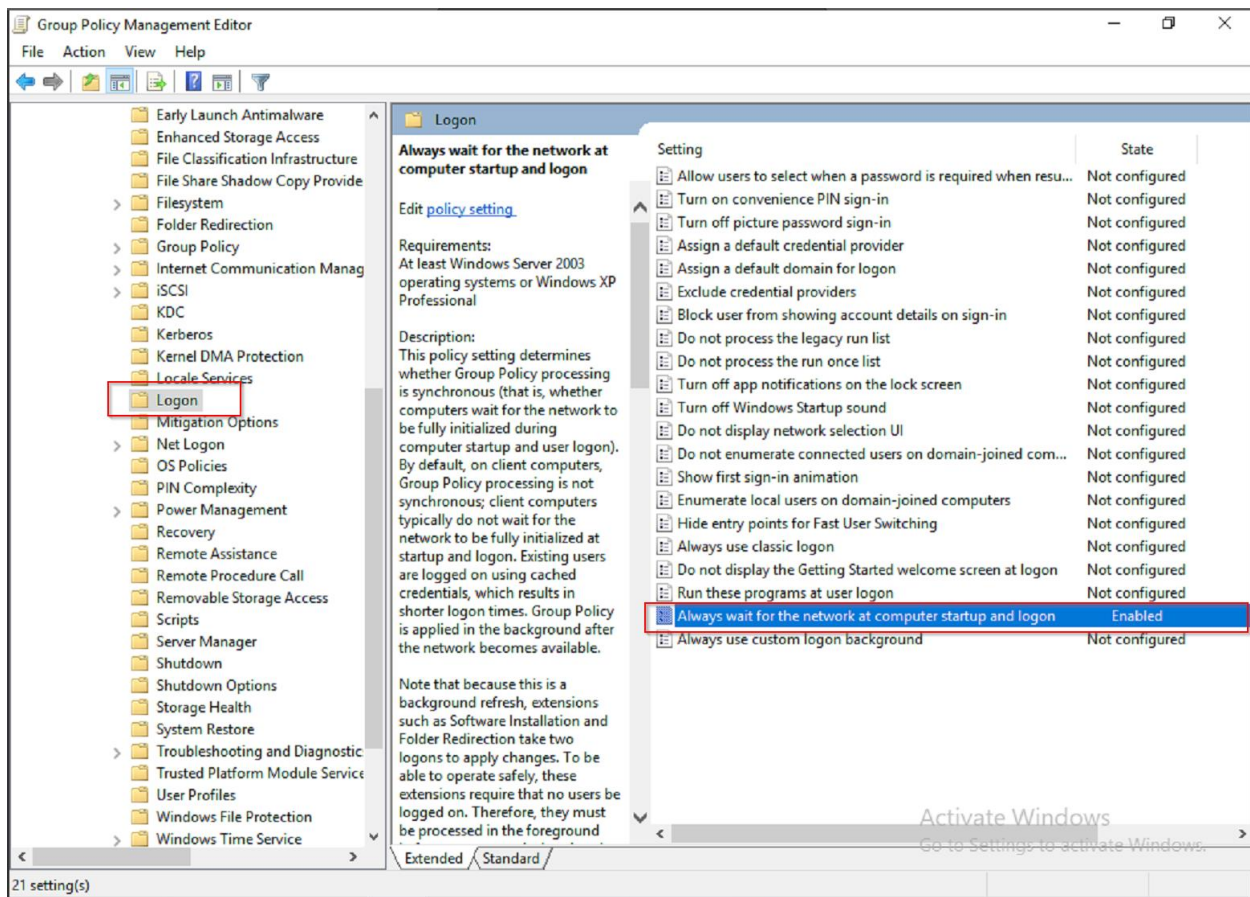
****It is suggested to enable the “Always wait for the network at computer startup and logon” policy if it’s already not enabled for the Domain.**

To do so:

Edit the GPO again and from the “Computer Configuration -- Policies -- Administrative Templates -- System – Logon”

Select “Always wait for the network at computer startup and logon” and enable the policy.





Always wait for the network at computer startup and logon

Always wait for the network at computer startup and logon

Previous Setting

Next Setting

☐ Not Configured

☒ Enabled

☐ Disabled

Comment:

Supported on:

At least Windows Server 2003 operating systems or Windows XP Professional

Options:

Help:

This policy setting determines whether Group Policy processing is synchronous (that is, whether computers wait for the network to be fully initialized during computer startup and user logon). By default, on client computers, Group Policy processing is not synchronous; client computers typically do not wait for the network to be fully initialized at startup and logon. Existing users are logged on using cached credentials, which results in shorter logon times. Group Policy is applied in the background after the network becomes available.

Note that because this is a background refresh, extensions such as Software Installation and Folder Redirection take two logons to apply changes. To be able to operate safely, these extensions require that no users be logged on. Therefore, they must be processed in the foreground before users are actively using the computer. In addition, changes that are made to the user object, such as adding a roaming profile path, home directory, or user object logon script, may take up to two logons to be detected.

If a user with a roaming profile, home directory, or user object logon script logs on to a computer, computers always wait for

OK

Cancel

Apply